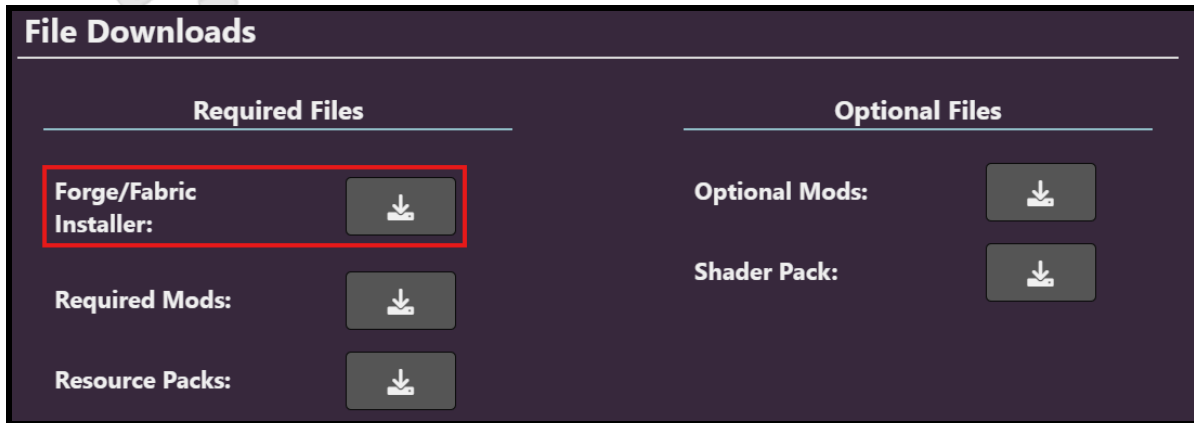


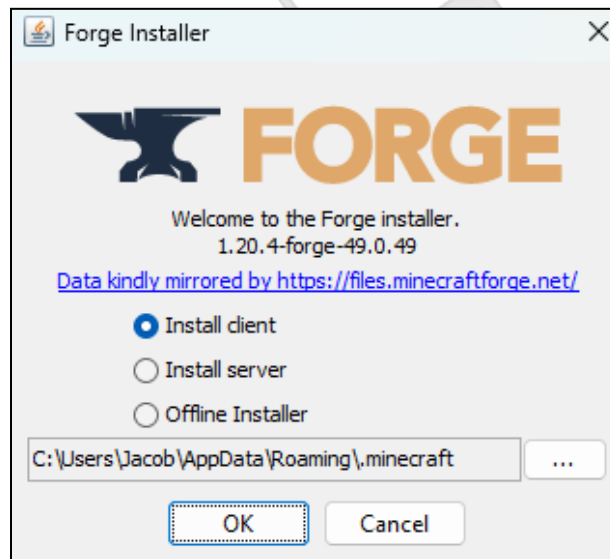
How-To: Install Forge

Before doing anything with the downloaded file, you need to start Minecraft on the version that you want to install Forge for. For example, if you want Forge for 1.20.1, you need to open Minecraft 1.20.1. Once Minecraft has launched, close the game.

Then, download the necessary forge installer from cometbelt.xyz

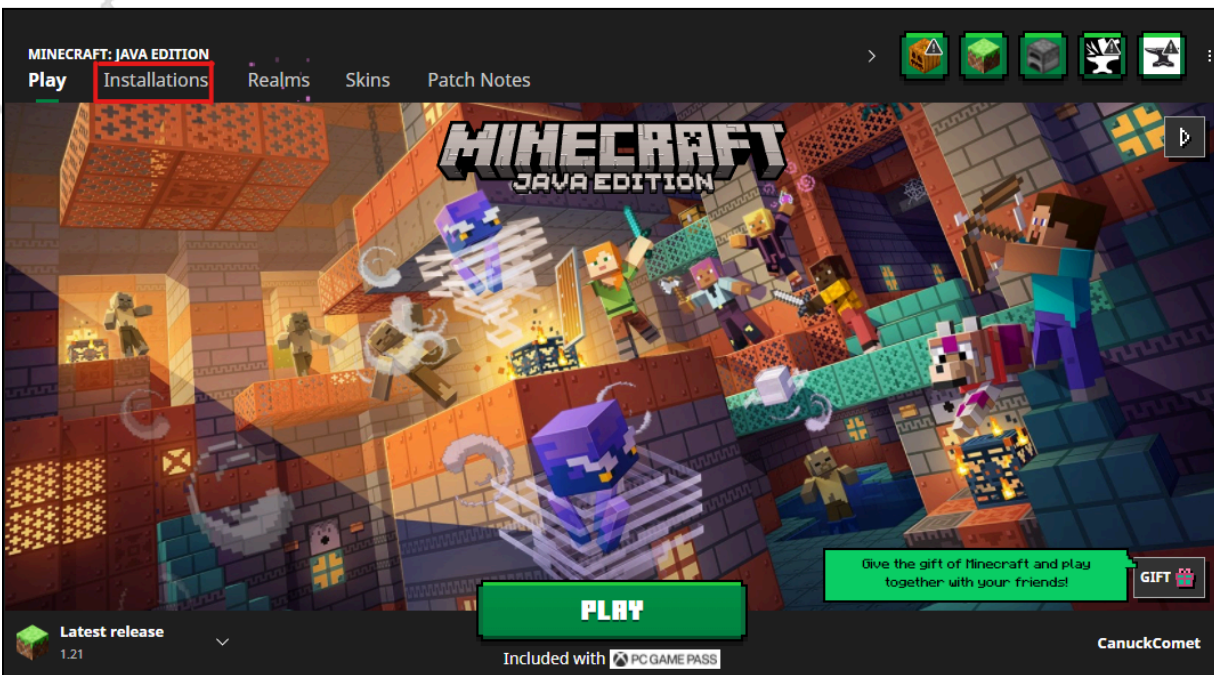


Then, go to your downloaded Forge jar file and double click it. This menu will pop up:

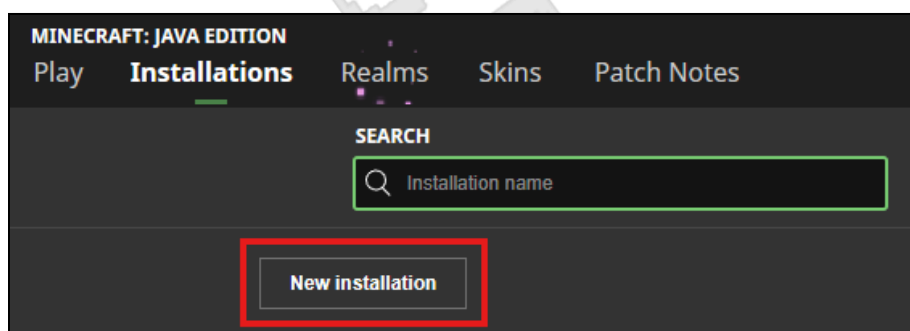


Select "Install Client" and hit "Ok"

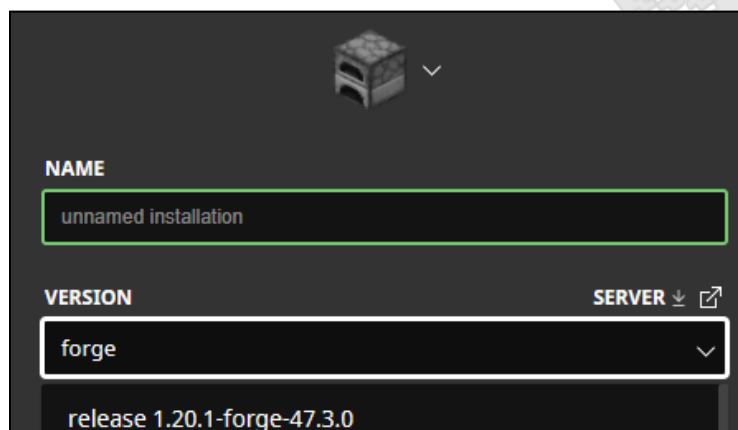
Once forge is installed, open the Minecraft Launcher (but do NOT launch the game yet).
In the launcher, select “Installations”



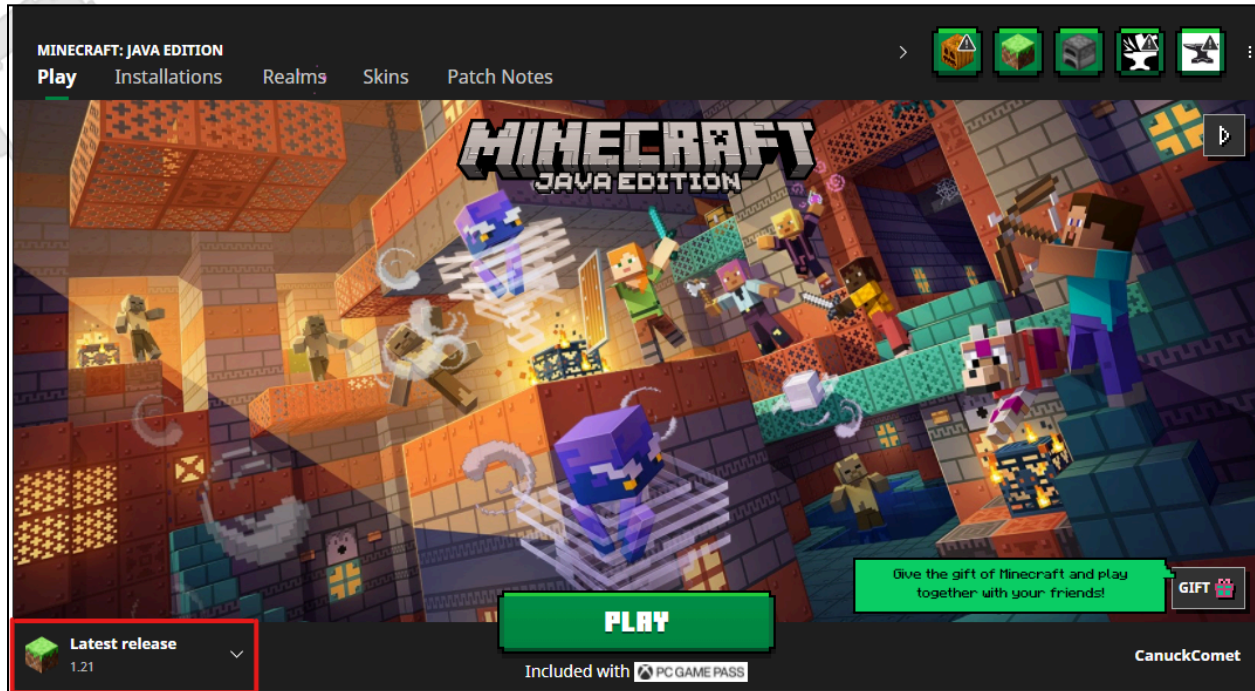
Select “New installation”



Name the new installation however you want and under “Version” select the forge version you just installed (just type forge and it should come up).



When launching Minecraft, select this installation and launch.



– OPTIONAL –

When making the installation, select “More Options”

In “JVM Arguments” you will see the parameter Xmx. This is the amount of RAM that you allocate to your Minecraft instance.

The default is 2GB, but if you want more you can change this.

If you want to specify MB instead of GB you can put ‘M’ instead of ‘G’

Ex.

If you want 4 GB of RAM allocated, you can put either

`-Xmx4G` OR `-Xmx4096M`

It is recommended to use at least 4GB for modded installations of Minecraft.